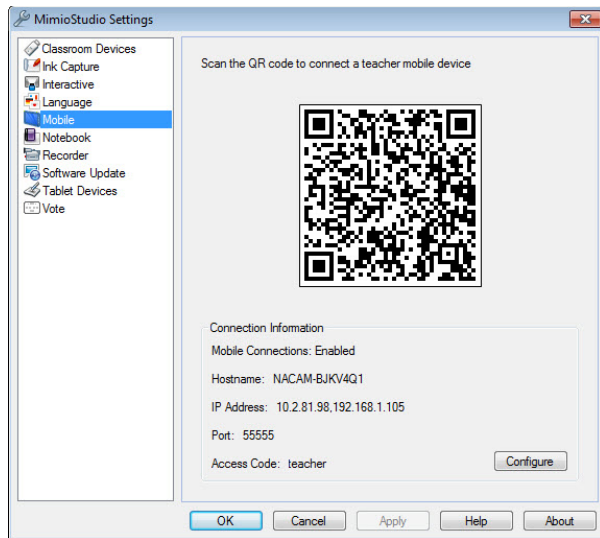


## Step 1

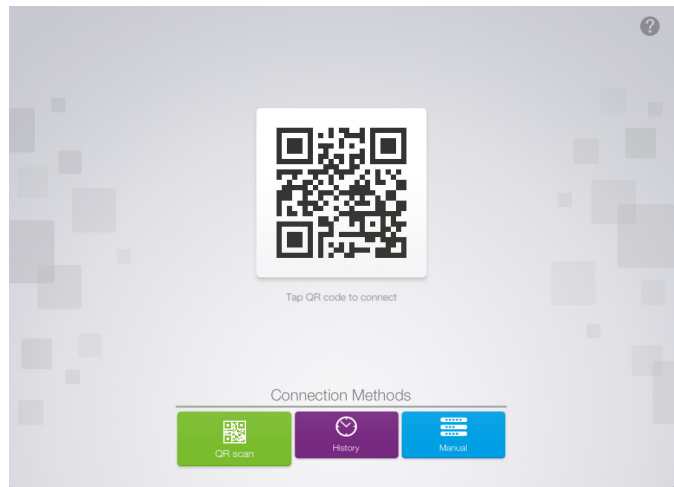
In the MimioStudio™ classroom software on the computer, click on “Tools” > “Settings”> “Mobile.”

Mac: Notebook > “Preferences” > “Mobile”



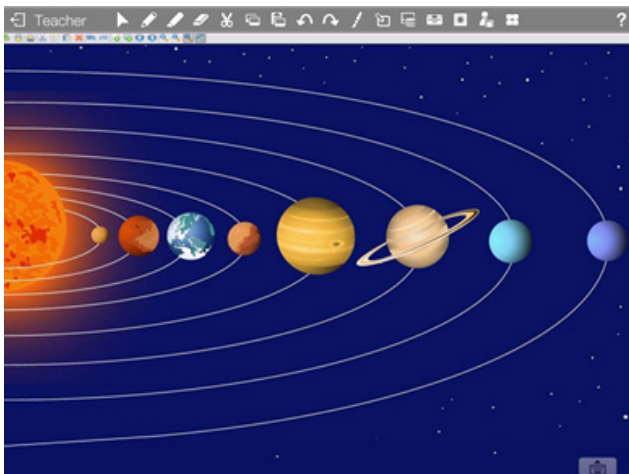
## Step 2

In the MimioMobile™ app on the teacher’s mobile device,\* the teacher should tap on the large QR code image and then point and align his or her mobile device camera at the QR code projected on the whiteboard or computer monitor.



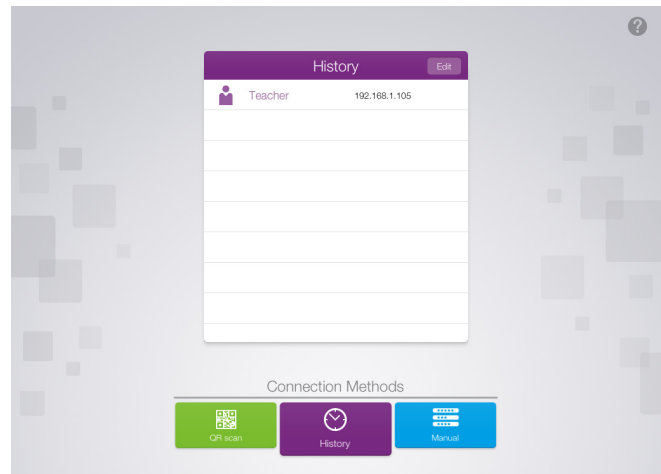
## Step 3

The MimioMobile app now has full control of your computer.



## If you’ve previously connected

Tap on the “History” tab and choose recent Teacher connection.

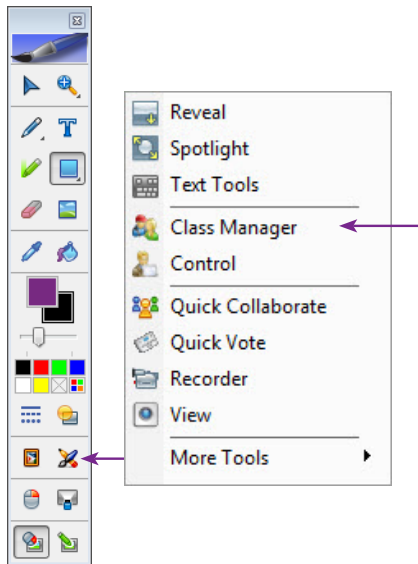


**Note:** Use of MimioPad™ tablets and/or devices with the MimioMobile app requires MimioStudio 11 software. All mobile devices must be connected to the same Wi-Fi network as the teacher’s computer.

\* Supported Devices: iPad 2 and higher, iPad mini, iPod Touch (4th generation and higher), iPhone (4 and higher), and Android 3.0 (Honeycomb) or higher phone and tablets.

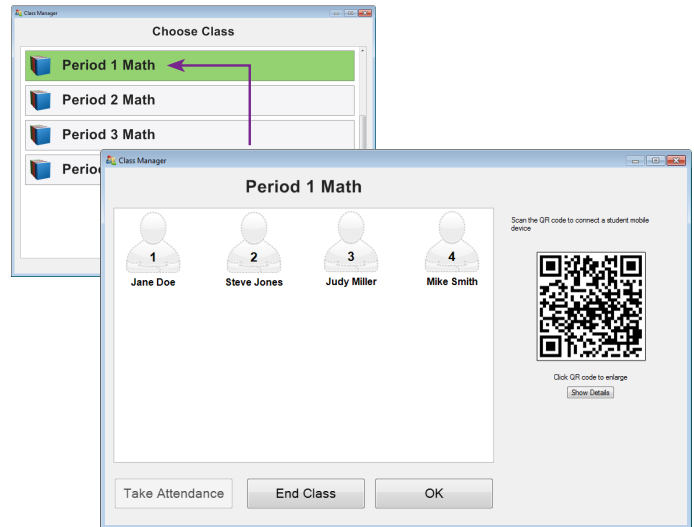
## Step 1

In the MimioStudio software on the teacher's computer, click on "Applications" > "Class Manager."



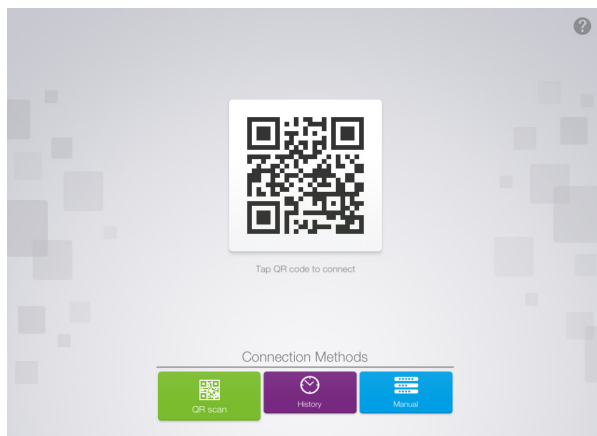
## Step 2

In the "Choose Class" window, double-click on the class you wish to select, or select the class and click on "Start Class." Then click on the QR code to enlarge the code, if needed, for the students.



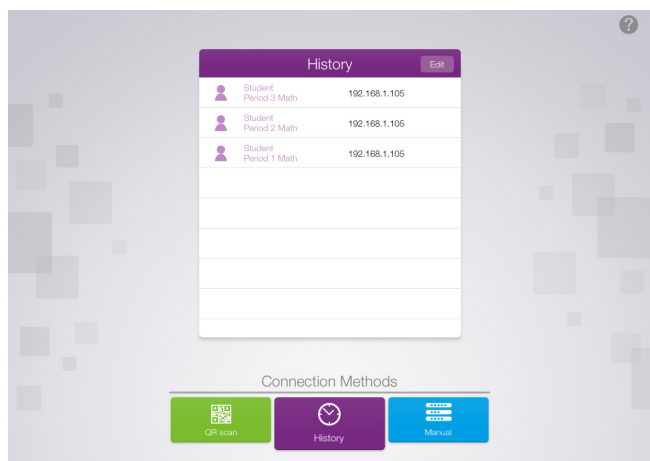
## Step 3

In the MimioMobile app on the student's mobile device,\* the student should tap on the large QR code image and then point and align his or her mobile device camera at the QR code projected on the whiteboard.



## If a student has previously connected

Have the student tap on the "History" tab and choose recent Student connection.



**Note:** Use of MimioPad tablets and/or devices with the MimioMobile app requires MimioStudio 11 software. All mobile devices must be connected to the same Wi-Fi network as the teacher's computer.

\* Supported Devices: iPad 2 and higher, iPad mini, iPod Touch (4th generation and higher), iPhone (4 and higher), and Android 3.0 (Honeycomb) or higher phone and tablets.